

**Early Diagnosis and Treatment of Parkinson's Disease:
A Continuing Pursuit**

Registration
Space is limited. Register now!

Online (preferred): www.ProCE.com • Phone: 1-800-748-7795 • Fax: 1-800-733-2129
Early registration is strongly encouraged. Please register no later than 3 days prior to the program date.

When registering, please indicate event code **831EAU**.

August 31, Eau Claire, WI: **831EAU**

-- Please print legibly --

Name (first & last): _____

MD NP RN Other _____

Title: _____

Specialty: _____

Daytime Phone: _____

Email: _____

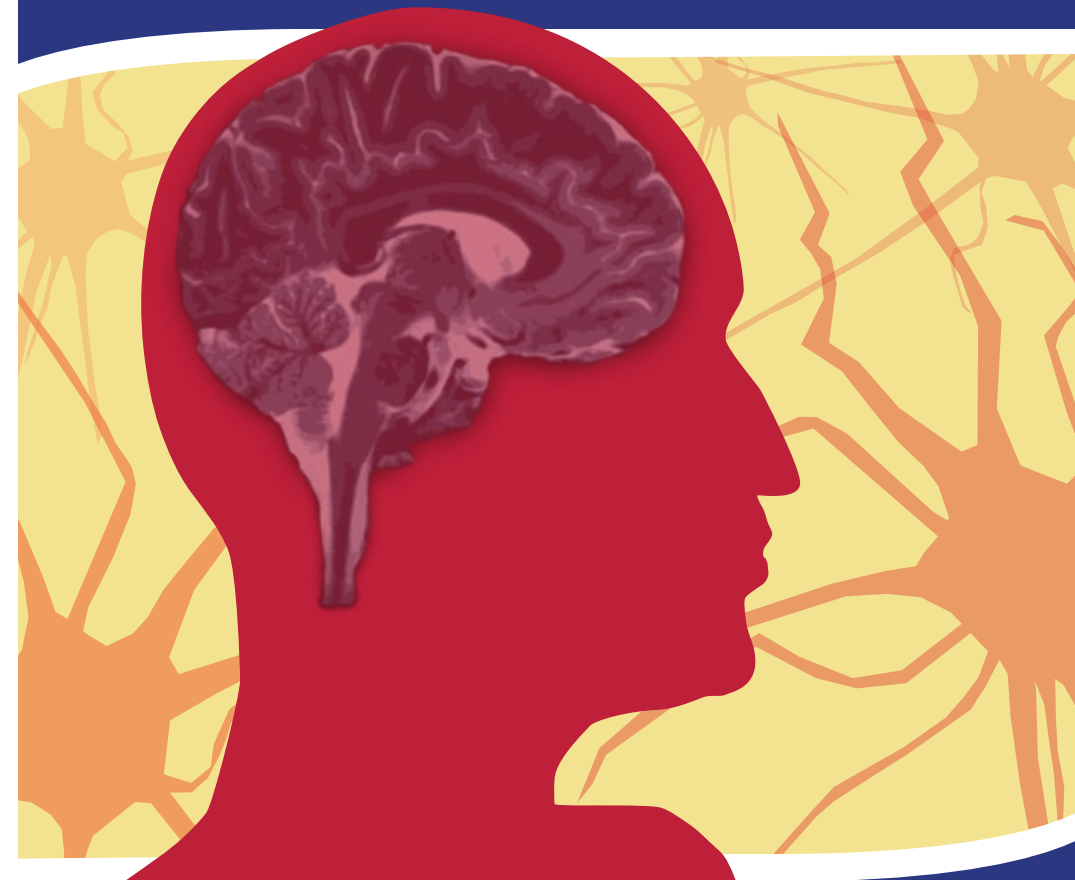
(to confirm registration)

FIRST CLASS MAIL
U.S. POSTAGE
PAID
PERMIT NO. 82
ST. CHARLES, IL

ProCE, Inc.
848 W. Bartlett Road
Suite 3E
Bartlett, IL 60103



ProCE presents...
A free CE/CME program for physicians,
nurse practitioners, and nurses



*Early Diagnosis and Treatment of
Parkinson's Disease: A Continuing Pursuit*

*Early Diagnosis and Treatment of
Parkinson's Disease: A Continuing Pursuit*

Program Agenda

- 6:30** PM..... Registration
7:00 PM..... Dinner
7:30 PM..... CE/CME Presentation
8:30 PM..... Adjourn

Tuesday, August 31, 2010

Jason Aldred, MD

Sweetwaters Restaurant

1104 West Clairemont Avenue

Eau Claire, WI

(715) 834-5777

Early Diagnosis and Treatment of Parkinson's Disease: A Continuing Pursuit

Program Description

Parkinson's disease (PD) is a neurodegenerative disorder characterized by classic motor symptoms, often with concurrent cognitive, autonomic, and sensory symptoms. Symptomatic therapies can provide benefits to PD patients for many years; however, the disease continues to progress and ultimately results in significant disability. Therefore, strategies that delay onset or slow progression of PD are an important consideration, and the pursuit of such agents has been a major focus of research. Data reported from clinical trials increasingly suggest that certain classes of drugs may confer disease-modifying effects. This program will inform healthcare providers about therapies that may delay or reduce the functional impairment of PD patients over time, especially when instituted early in the disease course.

Learning Objectives

The target audience for this program is neurologists, primary care physicians, nurse practitioners, neurology nurses, and other nurses with an interest in PD. At the completion of this program, the participant will be able to:

- Describe how patients with PD can potentially benefit from therapies that have a neuroprotective component.
- Explain the difference between symptomatic and neuroprotective effects in PD management.
- Summarize current, evidence-based recommendations on neuroprotective strategies for PD.
- Outline the putative disease-modifying effects of pharmacologic therapies for PD based on recently reported clinical trial data.

Funding



This program has been made possible through an educational grant from TEVA Neurosciences.

Program Faculty

Jason Aldred, MD

Medical Director

Gundersen Lutheran Movement Disorders Center

La Crosse, WI

Accreditation

Physicians

This activity has been planned and implemented in accordance with the essential Areas and Policies of the Accreditation Council for Continuing Medical Education (ACCME) through the joint sponsorship of ProCE, Inc. and the National Association of Managed Care Physicians (NAMCP). The NAMCP is accredited by the ACCME to provide continuing medical education (CME) to physicians. The NAMCP designates this educational activity for a maximum of 1.0 *AMA PRA Category 1 Credit*[™]. Physicians should only claim credit commensurate with the extent of their participation in the activity.

Nurses

CE is provided for this program through collaboration between ProCE, Inc. and Wild Iris Medical Education, Inc. Wild Iris Medical Education, WSNA CEARP Provider number PA-5/Feb/11, is an approved provider of continuing education by the Washington State Nurses Association, an accredited approver by the American Nurses' Credentialing Center's Commission on Accreditation. California Board of Registered Nursing Provider #12300. This activity provides 1.0 contact hour of nurse CE credit.

Disclosure

It is the policy of ProCE, Inc. to ensure balance, independence, objectivity and scientific rigor in all of its continuing education programs. Faculty must disclose to program participants any significant relationships with companies that manufacture or market products discussed during their presentation. Faculty conflict of interest disclosure will be announced at the beginning of the CE/CME activity. The planners of this activity have no real or perceived financial relationships to disclose.

Please note: The opinions expressed in this program should not be construed as those of the CE/CME provider. The information and views are those of the faculty through clinical practice and knowledge of the professional literature. Portions of this program may include the use of drugs for unlabeled indications. Use of drugs outside of labeling should be considered experimental and participants are advised to consult prescribing information and professional literature.