

**Cutting Edge 2010:  
Research Updates in Multiple Sclerosis**

**Registration**  
*Space is limited. Register now!*

Online (preferred): [www.ProCE.com](http://www.ProCE.com) • Phone: 1-800-748-7795 • Fax: 1-800-733-2129  
Early registration is strongly encouraged. Please register no later than 3 days prior to the program date.

When registering, please indicate the appropriate **event code**:

- July 13, Denver, CO: **713DEN**
- July 14, Bellingham, WA: **714BEL**
- July 14, Madison, WI: **714MSN**
- July 15, Appleton, WI: **715APL**
- July 19, Indianapolis, IN: **719IND**
- July 29, San Jose, CA: **729SAN**
- August 4, Fort Worth, TX: **804FTW**
- August 10, New Orleans, LA: **810NOR**

-- Please print legibly --

Name (first & last): \_\_\_\_\_

MD  NP  RN  Other \_\_\_\_\_

Title: \_\_\_\_\_

Specialty: \_\_\_\_\_

Daytime Phone: \_\_\_\_\_

Email: \_\_\_\_\_

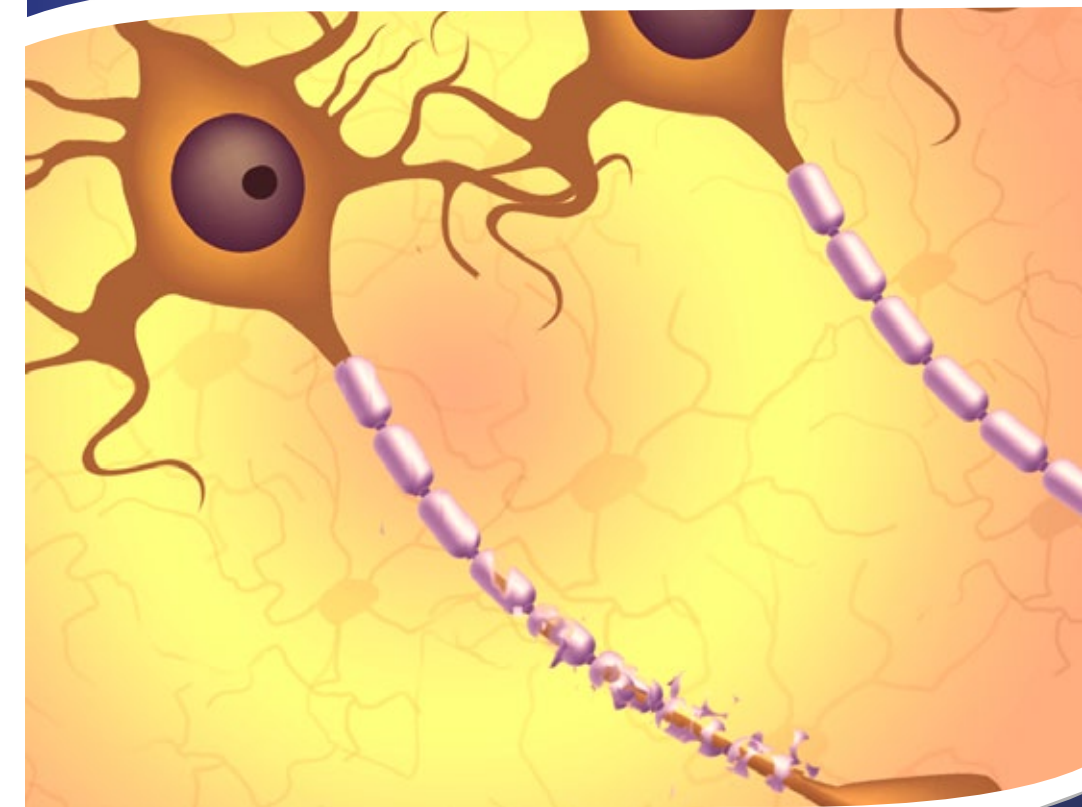
(to confirm registration)

PRESORTED  
FIRST CLASS MAIL  
U.S. POSTAGE  
**PAID**  
PERMIT NO. 82  
ST. CHARLES, IL

ProCE, Inc.  
848 W. Bartlett Road  
Suite 3E  
Bartlett, IL 60103



ProCE presents...  
A free CME/CE program for neurologists  
and neurology nurses



**Cutting Edge 2010:  
Research Updates in Multiple Sclerosis**

**Cutting Edge 2010:  
Research Updates in Multiple Sclerosis**

## Program Agenda

- 6:30 PM..... Registration  
7:00 PM..... Dinner  
7:30 PM..... CME/CE Presentation  
8:30 PM..... Adjourn

### Tuesday, July 13, 2010

**John R. Corboy, MD**  
**Sullivan's Steakhouse**  
1745 Wazee St.  
**Denver, CO**  
(303) 295-2664

### Wednesday, July 14, 2010

**Scott S. Zamvil, MD, PhD**  
**Fleming's Prime Steakhouse**  
750 N. Midvale Blvd.  
**Madison, WI**  
(608) 233-9550

### Monday, July 19, 2010

**Bruce L. Hughes, MD**  
**Mo's...A Place for Steaks**  
47 S. Pennsylvania St.  
**Indianapolis, IN**  
(317) 624-0720

### Wednesday, August 4, 2010

**Wanda Castro-Borrero, MD**  
**GRACE**  
777 Main Street  
**Fort Worth, TX**  
(817) 877-3388

### Wednesday, July 14, 2010

**Lily K. Jung, MD, MMM, FAAN**  
**Hotel Bellwether**  
Admiral Room  
One Bellwether Way  
**Bellingham, WA**  
(877) 411-1200

### Thursday, July 15, 2010

**Scott S. Zamvil, MD, PhD**  
**Black & Tan Grille**  
(Located in the CopperLeaf Boutique Hotel)  
300 West College Ave.  
**Appleton, WI**  
(920) 380-4745

### Thursday, July 29, 2010

**Allen Bowling, MD, PhD**  
**Left Bank Brasserie**  
377 Santana Row, Suite 1100  
**San Jose, CA**  
(408) 984-3500

### Tuesday, August 10, 2010

**Flavia Nelson, MD**  
**GW Fins**  
808 Bienville St.  
**New Orleans, LA**  
(504) 581-3467

## Cutting Edge 2010: Research Updates in Multiple Sclerosis

### Program Description

International congresses dedicated to multiple sclerosis (MS) bring together leading experts in MS research to share recent advances and valuable insights into the data and its clinical relevance. However, many physicians are unable to attend and actively participate in these important gatherings. This educational program is intended to deliver important highlights and compelling research data on the management of MS that has emerged thus far in 2010. These cutting-edge findings include promising data on orally administered disease-modifying therapies, as well as new symptomatic therapies. These and other research breakthroughs will be presented in the context of the current state of the art in MS treatment, allowing neurology practitioners to begin looking ahead toward implementing advances in MS management and improving the care of patients with MS.

### Learning Objectives

The target audience for this program is neurologists and neurology nurses. At the completion of this program, the participant will be able to:

- Discuss the most recent and clinically relevant research on the pathogenesis and treatment of MS.
- Evaluate current therapeutic options and best practices for the management of MS.
- Identify radiological and surrogate disease markers that may be predictive of future disability in MS and useful in therapeutic decision making.
- Describe the mechanism of action, efficacy, and adverse events associated with newly emerging MS therapies.
- Formulate new strategies for treating patients with MS who are unresponsive to or noncompliant with current disease-modifying therapies.

### Funding



This program has been made possible through an educational grant from TEVA Neurosciences.

### Accreditation

#### Physicians

This activity has been planned and implemented in accordance with the essential Areas and Policies of the Accreditation Council for Continuing Medical Education (ACCME) through the joint sponsorship of ProCE, Inc. and the National Association of Managed Care Physicians (NAMCP). The NAMCP is accredited by the ACCME to provide continuing medical education (CME) to physicians. The NAMCP designates this educational activity for a maximum of 1.0 *AMA PRA Category 1 Credit*™. Physicians should only claim credit commensurate with the extent of their participation in the activity.

#### Nurses

CE is provided for this program through collaboration between ProCE, Inc. and Wild Iris Medical Education, Inc. Wild Iris Medical Education, WSNA CEARP Provider number PA-5/ Feb/11, is an approved provider of continuing education by the Washington State Nurses Association, an accredited approver by the American Nurses' Credentialing Center's Commission on Accreditation. California Board of Registered Nursing Provider #12300. This activity provides 1.0 contact hour of nurse CE credit.

## Program Faculty

**Allen Bowling, MD, PhD**  
*Clinical Associate Professor of Neurology*  
University of Colorado Health Sciences Center  
Englewood, CO

**Wanda Castro-Borrero, MD**  
*Assistant Professor, Neurology*  
UT Southwestern Medical Center  
Dallas, TX

**John R. Corboy, MD**  
*Professor, Department of Neurology*  
University of Colorado Denver School of Medicine  
Aurora, CO

**Bruce L. Hughes, MD**  
*Director, Ruan MS Center*  
Des Moines, IA

**Lily K. Jung, MD, MMM, FAAN**  
*Neurologist*  
Swedish Neuroscience Institute/Swedish Physicians Division  
Seattle, WA

**Flavia Nelson, MD**  
*Assistant Professor of Neurology*  
*Associate Director MRI Analysis Center*  
Multiple Sclerosis Research Group  
University of Texas Medical School at Houston  
Houston, TX

**Scott S. Zamvil, MD, PhD**  
*Associate Professor*  
Department of Neurology  
Program in Immunology  
University of California, San Francisco  
San Francisco, CA

### Disclosure

It is the policy of ProCE, Inc. to ensure balance, independence, objectivity and scientific rigor in all of its continuing education programs. Faculty must disclose to program participants any significant relationships with companies that manufacture or market products discussed during their presentation. Faculty conflict of interest disclosure will be announced at the beginning of the CME/CE activity. The planners of this activity have no real or perceived financial relationships to disclose.

**Please note:** The opinions expressed in this program should not be construed as those of the CME/CE provider. The information and views are those of the faculty through clinical practice and knowledge of the professional literature. Portions of this program may include the use of drugs for unlabeled indications. Use of drugs outside of labeling should be considered experimental and participants are advised to consult prescribing information and professional literature.